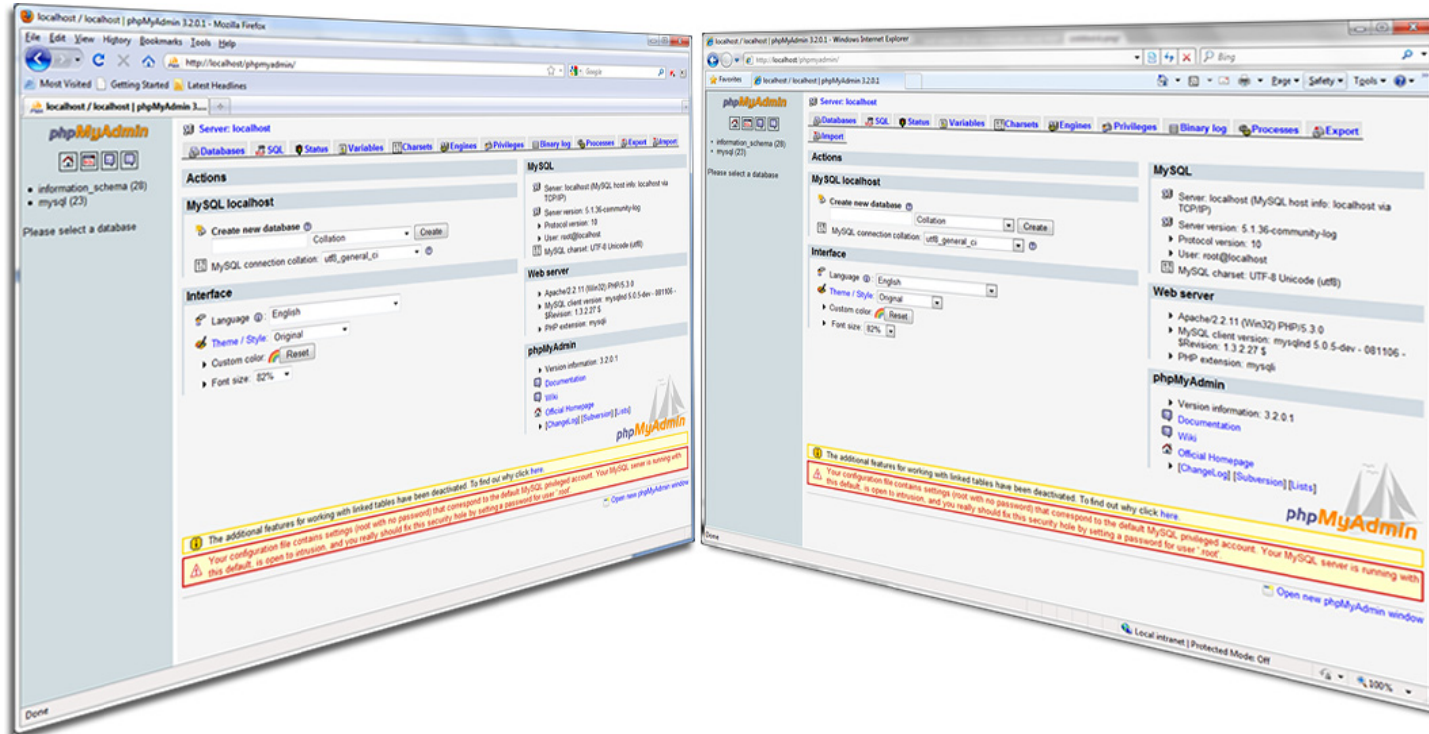


Proxy Script Configuration For Chancellor College Internal Network



How to Configure Your Web Browser

When configured properly, browsers should detect proxy settings automatically from some script. For demonstration purposes we will use **Internet Explorer 8** and **Mozilla Firefox 3.6**.

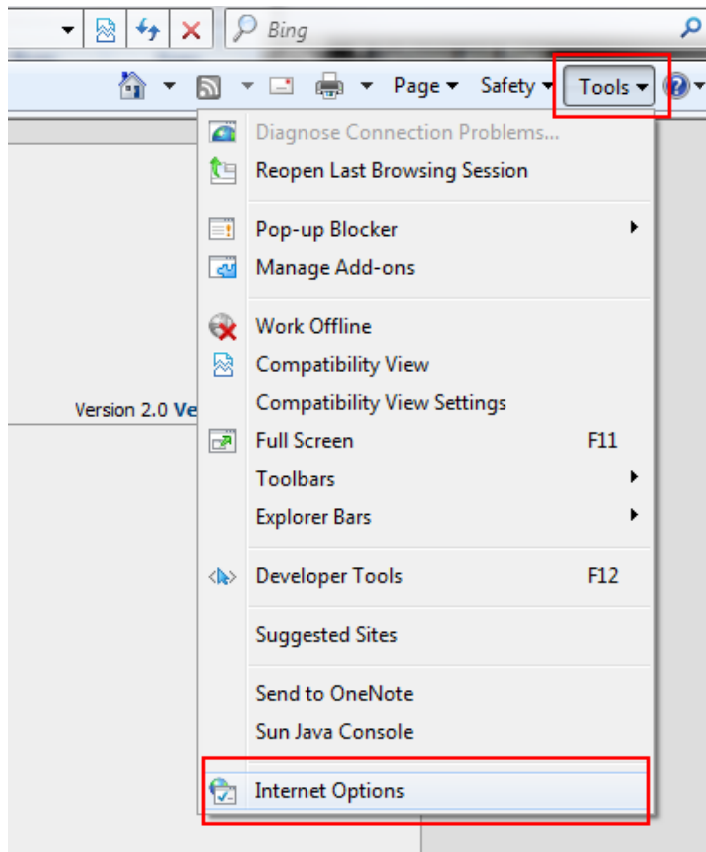




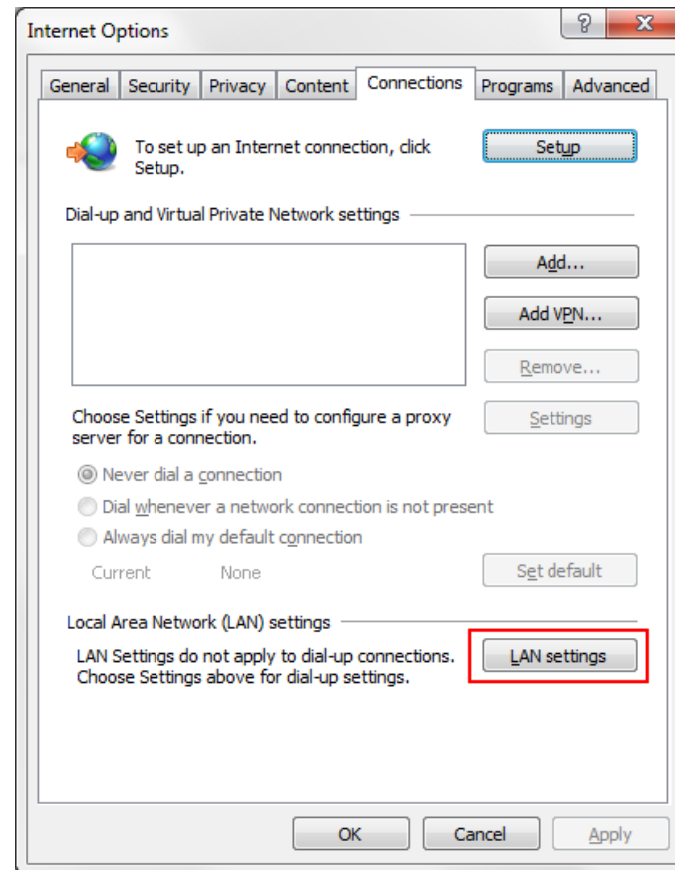
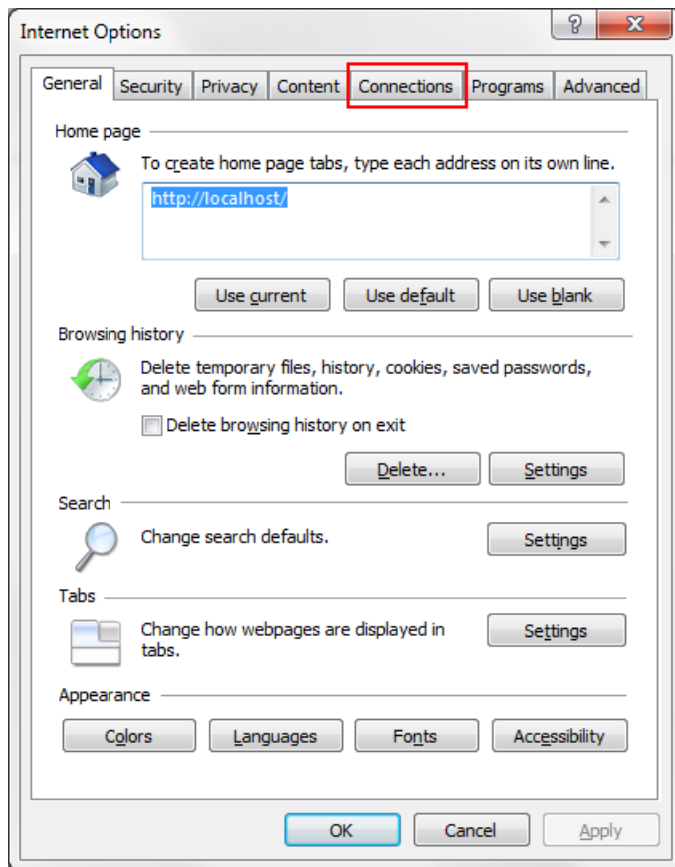
To configure the Automatic Proxy Selection Settings in Internet Explorer



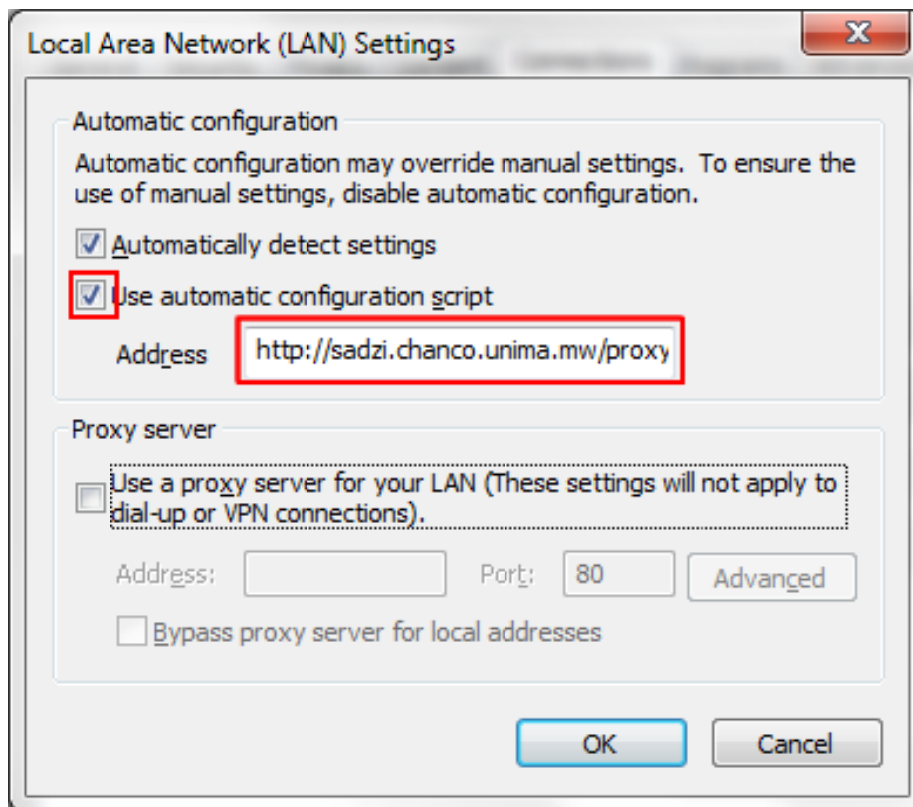
1. Click the **Tools** menu in Internet Explorer, and then click **Internet Options**.



2. Click the **Connections** tab, and then click **LAN Settings**.



3. Check (click) the options that say “Automatically detect settings” and “Use automatic configuration script” and enter the following URL for the script in the text box below the option:
http://sadzi.chanco.unima.mw/proxy.pac



Note: Make sure the Proxy server options at the bottom of the dialog box are left alone and unchecked.

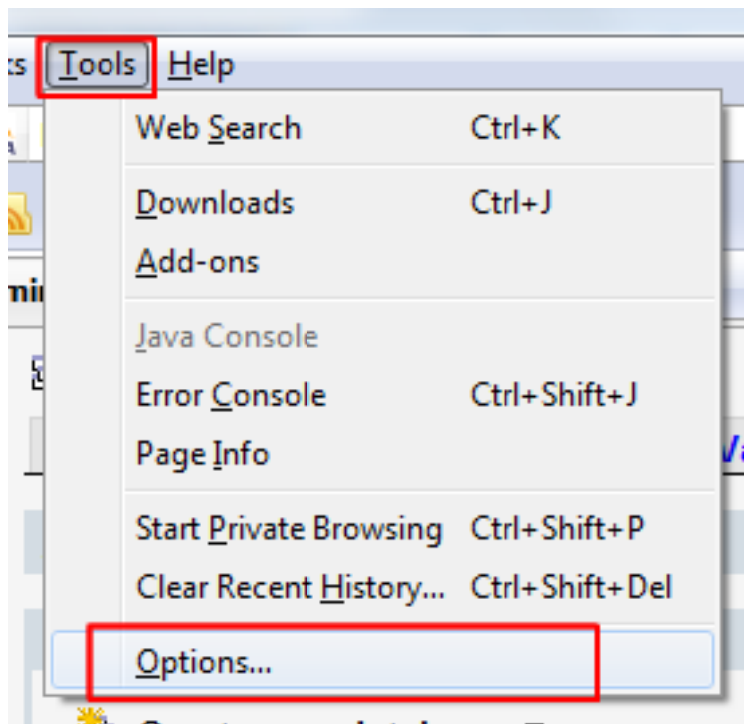
4. Click **OK** on all open windows to save settings.

To configure the Automatic Proxy Selection Settings in Mozilla Firefox

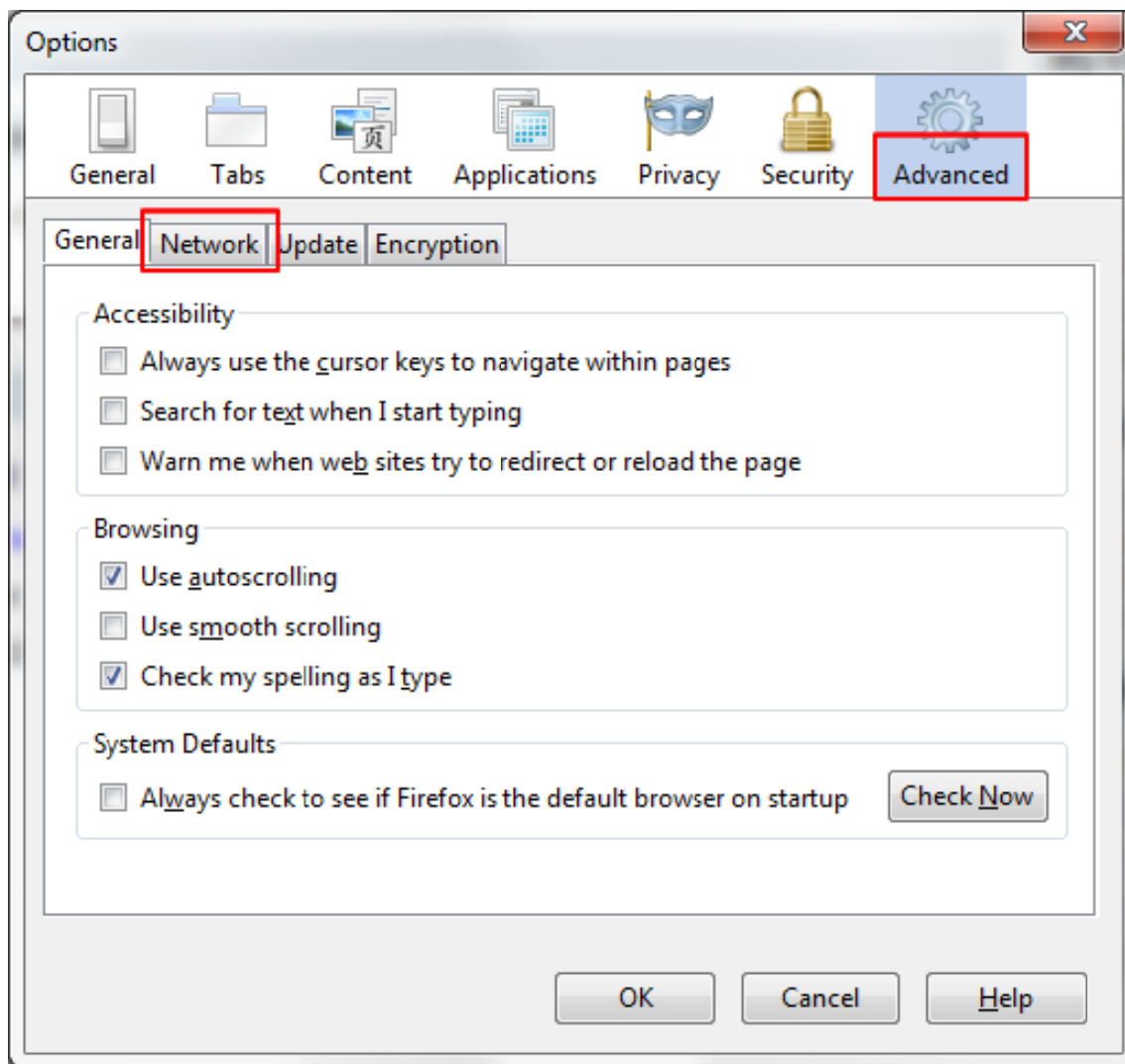
Firefox



1. Click the **Tools** menu in Mozilla, and then click **Options**.

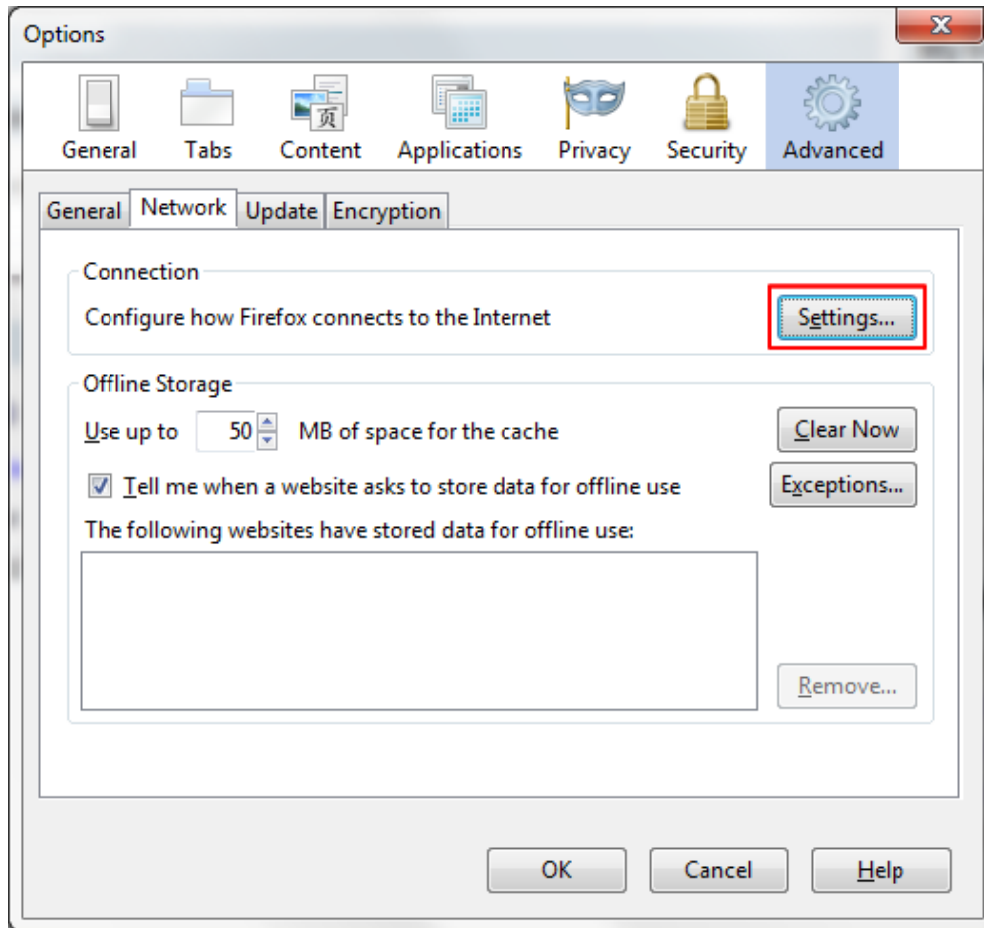


2. Click the **Advanced** tab.

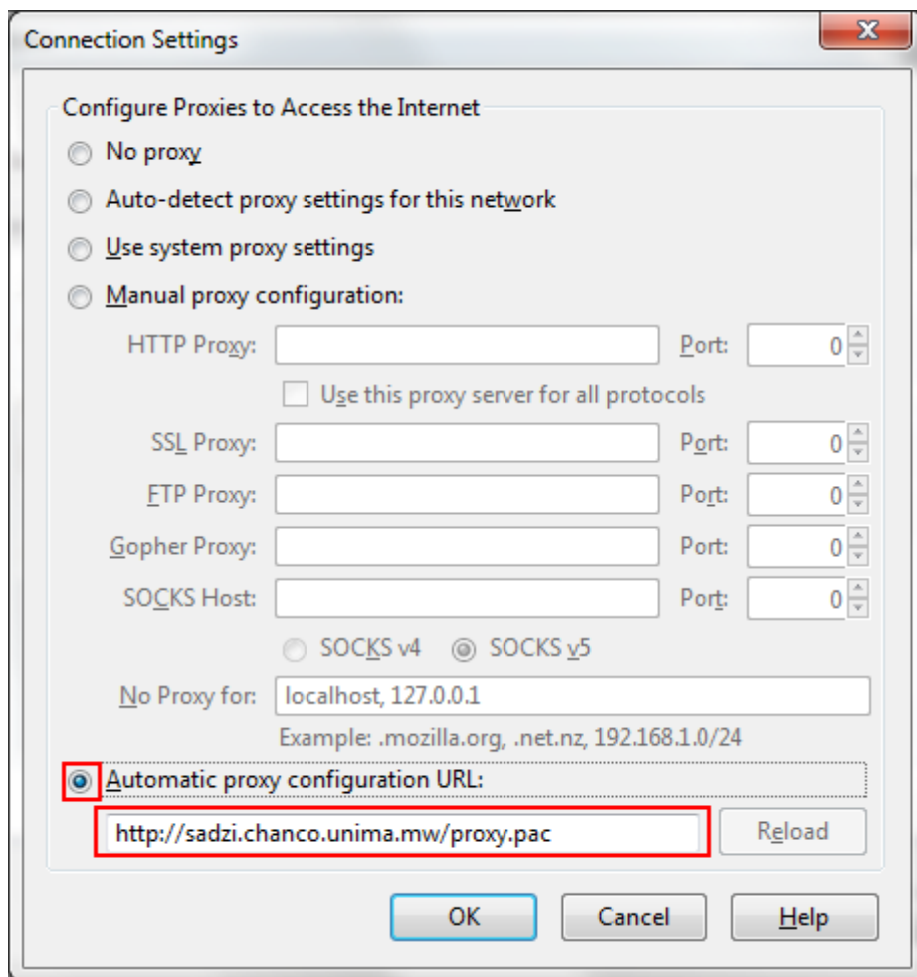


3. Open the **Network** tab.

4. Click **Settings** button in the **Connections** area.



5. Check the button that says **Automatic Proxy Configuration URL** and enter the following: **http://sadzi.chanco.unima.mw/proxy.pac**



Note: Make sure the Manual Proxy Server Configuration option above the dialog box is left alone and unchecked.

Testing Your Settings

Try to browse the site www.chanco.unima.mw. It should load instantly. If this is not the case, go over the procedure once more and check that you have no errors in your configuration especially in the URL for the proxy.pac script.

NOTE: For web browsers not listed here, you can follow a similar procedure.